



GREAT HEARTS WESTERN HILLS

A Great Hearts Academy

8702 Ingram Road | San Antonio, Tx 78251 | Office: (210) 888-9488 | Fax: (210) 888-9484 | www.greatheartswesternhills.org

Dear 6th Grade Families,

Welcome to our Extracurricular Week! This packet is an opportunity for scholars to enjoy different subject material. There is no assessment this week to return to your teacher.

We will continue hosting the scheduled Social Zoom classes this week to discuss our last novel, *The Adventures of Tom Sawyer* and enjoy our time together.

This last week of school is certainly not like any other we have experienced! The 6th grade team is grateful for everyone's patience and support as we continued to work to provide our students with meaningful assignments that promoted the classical education we all seek for at Great Hearts Western Hills. As we say goodbye to our 6th graders, we want to thank each one of our scholars for the memories and the learning we have shared this year. We encourage our scholars to always strive to be the best that they can be at anything they do! Parents, we thank you for allowing us to be your child's teachers. It has truly been a wonderful and rewarding year for us! We look forward to welcoming our Class of 2026 back to campus in the Fall as 7th graders! Stay Spartan Strong!

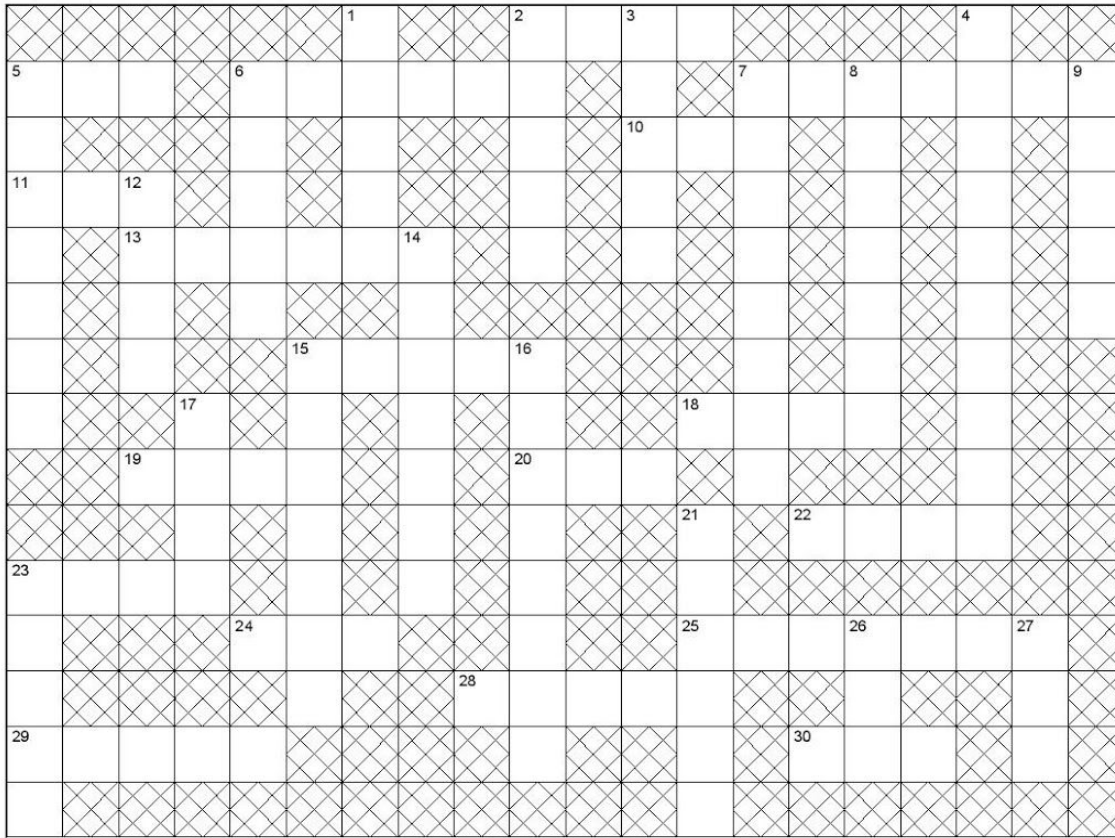
All of our best,

Your 6th Grade Teachers

	Teacher's Name	Email
6A Lead	Nicole Glowe	Nicole.glowe@greatheartswesternhills.org
6A AT	Aleksandra Novikova	Aleksandra.Novikova@greatheartswesternhills.org
6B Lead	Julia Boyle	Julia.Boyle@greatheartswesternhills.org
6B Lead	Ingrid Daly	Ingrid.Daly@greatheartswesternhills.org

LITERATURE

The Adventures of Tom Sawyer Crossword Puzzle



Across

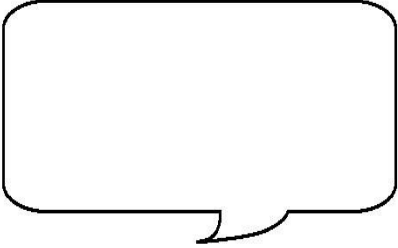
2. Tom gave some to Peter, making him act crazy: ___ killer
5. The boys stole Mr. Dobbins's
6. Tom blew out Becky's to conserve.
7. Tom was one to Dr. Robinson's murder.
10. Went to island with Huck and Tom
11. He took the blame for tearing the teacher's book.
13. New boy; spilled ink on Tom's book
15. Place where the trial is held
18. Dead ones are good for curing warts.
19. Place where Tom and Becky got lost
20. Tom had been engaged to her before Becky.
22. Group of boys; Tom Sawyer's ___
23. Son of the town drunk
24. It spilled on Tom's spelling book.
25. Sunday school superintendent
28. She was engaged to Tom.
29. The boys left it and the pick downstairs.
30. Tom had a sore one.

Down

1. A gory one was found next to Dr. Robinson
2. The cat
3. Murderer: ___ Joe
4. Tom's town: St. ___
5. Tom blamed the unsuccessful marble spell on these.
6. Tom got these and kisses from Aunt Polly upon his return.
7. He saved Widow Douglas.
8. Ten yellow ones were redeemed for a Bible.
9. Small boat
12. Tom's girl cousin
14. The widow
15. AKA Twain
16. Becky's last name
17. Tom's notepaper
21. Tom's last name
23. Haunted ___
26. Number ___
27. Tom's half-brother

The Adventures of Tom Sawyer Comic Strip

- Choose any event from the story you can communicate through illustration (think carefully about what can fit into a six-frame comic).
- Create a six-frame comic strip with the first frame doing double-duty as a title and picture.
- Provide a neatly-executed caption at the bottom of each frame.
- You may use thought and conversation bubbles.

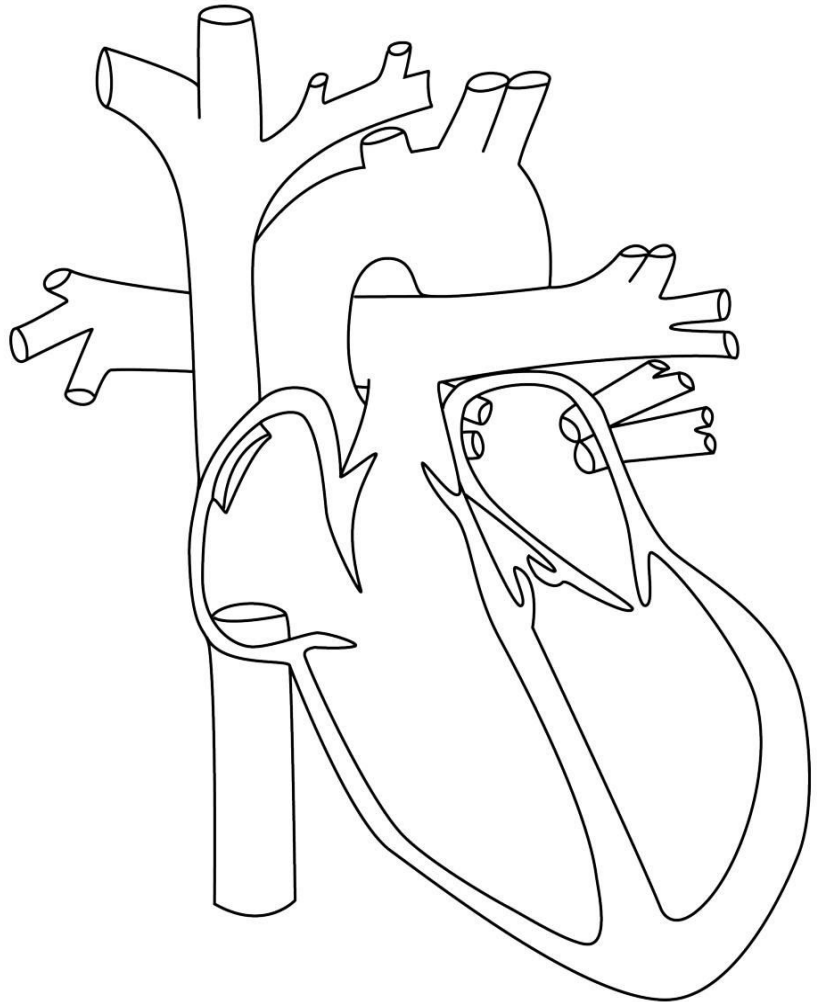
		
		By _____

SCIENCE

The Human Heart Coloring Activity

Directions:

1. Label and color the superior vena cava blue.
2. Label and color the inferior vena cava blue.
3. Label and color the right atrium violet.
4. Label and color the right ventricle brown.
5. Label and color the pulmonary artery sky blue.
6. Label and color the pulmonary vein pink.
7. Label and color the left atrium orange.
8. Label and color the left ventricle yellow.
9. Label and color the aorta red.
10. Label and color the tricuspid valve grey.
11. Label and color the pulmonary valve teal.
12. Label and color the mitral valve green.
13. Label and color the aortic valve magenta.
14. Label and color the septum tan.
15. Draw arrows showing the direction of blood flow through the heart.



Organelle Riddles

Read each description below and then identify the correct cell structure. Write your answer on the line provided using only 10 of the following words:

Golgi Body (Complex)
Endoplasmic Reticulum
Nucleus
Ribosomes

Cell membrane
Cell Wall
Vacuole
Lysosomes

Vesicle
Chloroplast
Chromosomes
Mitochondria

1. I'm a real "powerhouse"
That's plain to see
I break down food
To release energy.
What am I? _____

2. I'm strong and stiff
Getting through me is tough
I'm found only in plants
I'm what makes sticks tough
What am I? _____

3. My name means colored bodies
And I contain DNA
I pass on traits to new cells
In a systematic way
What am I? _____

4. I'm the brain of the cell
Or so they say
I regulate activities
From day to day
What am I? _____

5. I'm found only in plant cells
I'm as green as can be
I make food for the plant
Using the sun's energy
What am I? _____

6. I'm a series of tubes
Found throughout the cell
I package proteins
And other things as well
What am I? _____

7. I'm full of holes
Flexible and thin
I control what gets out
As well as what comes in
What am I? _____

8. Proteins are made here
Even though I'm quite small
You can find me in the cytoplasm
Or attached to the ER's wall
What am I? _____

9. I've been called the storage tank
By those with little taste
I'm a sack filled with water,
Food, enzymes, and waste
What am I? _____

10. Since I contain many enzymes
I can digest an injured cell
And can break down a large molecule
(like a protein) into a smaller one as well
What am I? _____

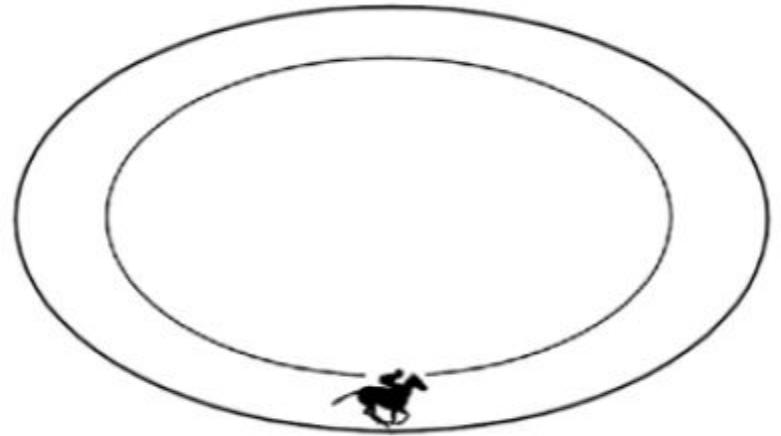


Kentucky Derby Math

The Kentucky Derby is a horse race held annually in Louisville, Kentucky, United States, almost always on the first Saturday in May, capping the two-week-long Kentucky Derby Festival. The competition is a Grade I stakes race for three-year-old Thoroughbreds at a distance of one and a quarter miles at Churchill Downs.

- The race was first held in 1831. How many times has the race been run?
- The average winning race time is just over 2 minutes. What fraction of an hour is 2 minutes?
- There are 20 horses in the Kentucky Derby. Without considering the speed or experience of each horse, what is the probability of choosing the winning horse? State your answer in the form of a fraction.

- Divide the track into $\frac{1}{2}$'s, $\frac{1}{4}$'s, $\frac{1}{8}$'s, and $\frac{1}{16}$'s.



- Use the model of horses and jockeys below to write at least 2 ratios.



8. If a horse wins the Kentucky Derby, the Preakness, and the Belmont, it's called winning the Triple Crown. This accomplishment is so rare that it has only happened in approximately 12% of the years since it first occurred. Using what you learned from your answer to question #1, how many times has this happened? (Hint.....Ratio) $\frac{\text{is}}{\text{of}} = \frac{p}{100}$

9. It's a tradition to wear fancy, wide-brimmed hats at the Derby. If the diameter of this hat is 15 inches, what is the circumference of the hat?



10. Find the mean, median, mode, and range of the number of horses who have finished the race in each of the 10 years listed.

Mean (average) _____

Mode (The number which appears most often in a set of numbers) _____

Range (The difference between the lowest and highest values) _____

Year	Number of Horses that Finished
2003	16
2004	15
2005	20
2006	20
2007	20
2008	20
2009	19
2010	20
2011	19
2012	19

MATH

Design your own "Classical" Theme Park

You have been tasked to design your own Theme Park using themes from novels you have read or periods in History. You will create the theme park on a sheet of graph paper.

Each square on the graph paper is 1 square foot. Each ride / attraction you create needs to have a realistic space. For example, a roller coaster can't take up only 5 squares, it needs to be at least a 10 x 10 space to be realistic, but not everything has to be perfectly square.

Your theme park also needs space to walk. Your pathways need to be at least two spaces wide. Everything has to be able to be walked to on paths.

You can split things up however you would like, it's your theme park! Some things you might include are:

Roller Coasters	Restaurants / Snack Shops	
Gift Shops	Rides that aren't just roller coasters	
Water Rides	Ticket Booth	Arcade
Security	Cleaning Building	Bathrooms

Your theme park also has to have a name! The roller coasters and all the shops and buildings need to be named as well. Be creative!

Now for the Math! :)

Every square foot of rides and shops and buildings you make have to be put on concrete. The pathways also have to be made of concrete. You'll need to count how many square feet of concrete you'll need for your park and see how much it costs for the concrete.

Concrete costs \$5.75 for every square foot. For example, a 10x10 "Paul Revere's Ride" roller coaster takes up 100 sq. ft. 100 times x 5.75 is \$575 for the one roller coaster.

Once you've calculated how much concrete will cost, you will need to mark off (draw) a fence around the park. Your fence doesn't have to be a perfect square / rectangle, it can curve and move with the park. You can even fence certain things off like a guard shack if you wanted to.

Every square foot that the fence sits on costs \$15.50, so you'll need to calculate all your fencing costs as well.

After you've added up the fence and concrete costs, you'll get a total cost for your park. You will then research ticket costs for theme parks and decide on how much you want your admission price to be. Then, you will figure out how many people need to visit your park in order to pay for all of your construction costs and start making a profit!

Have fun!



History:

Latin American Words

L	E	F	I	D	E	L	C	A	S	T	R	O	S
A	R	B	S	E	D	N	A	N	H	A	B	E	A
Z	A	P	A	S	T	I	S	T	A	S	R	L	A
R	G	V	I	T	I	A	H	C	S	D	T	C	S
S	U	O	A	C	H	L	M	T	A	S	O	C	E
E	S	L	B	I	L	E	L	M	E	L	O	L	N
D	B	C	O	C	U	B	A	R	O	O	S	O	A
I	R	A	L	S	T	R	O	M	P	U	E	I	C
L	A	N	I	D	R	F	B	D	S	C	I	L	I
S	Z	O	V	E	N	I	P	A	N	A	M	A	R
D	I	E	I	I	A	C	O	F	F	E	E	L	R
U	L	S	A	Y	R	E	V	A	L	S	N	L	U
M	C	R	O	A	D	M	N	C	H	I	L	E	H
A	H	G	U	L	F	O	F	M	E	X	I	C	O

HAITI
ANDES
ZAPASTISTAS
SIERRA MADRES
FIDEL CASTRO
HURRICANES
GULF OF MEXICO
CUBA
RAINFOREST
MUDSLIDES
SLAVERY
BRAZIL
PANAMA
OIL
CHILE
COFFEE
COLOMBIA
BOLIVIA
SUGAR
VOLCANOES

Create Your Own Civilization

You have studied the civilizations of Mesopotamia, Egypt, Israel, Greece, and Rome.

Imagine an Apocalyptic event has occurred in the world, and you are left with others to create a brand new civilization. Only North America, South America, and Australia have survived. Create this new civilization with the following new criteria:

- 1) **GEOGRAPHY, ECONOMY** – First, decide which continent on which you wish to live. Next, determine which part of the continent will be best for your survival based on its available geographical features. Draw a map and label **at least 5** of these geographical features; include these in a map key. Make sure to explain how and why these features are important to your survival. Explain the specific details of your economy (who, what, how, where) and how your economy will be affected by your civilization's geography. Anything related to your economy should be included in your key. For example, trade routes should be clearly labeled on map and key.
- 2) **RELIGION** – What is your civilization's religion or philosophy? Explain your beliefs/rituals and how this affects your civilization. Include at least one illustration.
- 3) **ACHIEVEMENTS** – On your picture, illustrate and explain at least 3 major achievements of your civilization. No electricity can be used.
- 4) **POLITICS** – Describe your political structure including leadership, citizenship, and governmental bodies. You will also describe/explain any conflicts your civilization may have with neighboring areas and explain how these are resolved.
- 5) **SOCIAL STRUCTURE** – Illustrate and label the levels within your Social Structure in a similar fashion to those you've seen in civilizations such as Egypt.



Ancient Civilizations

AKKADIA

ARAB EMPIRE

ASSYRIA

AZTEC

BABYLON

BYZANTINE

CELTS

CHINA

EGYPT

ETRUSCAN

FRANKS

HUNS

INCAS

INDIA

JAPAN

MAYANS

MONGOLS



OTTOMAN EMPIRE

PERSIA

ROMAN EMPIRE

VIKINGS



Vocabulary:

Our or Are?

Which do you use?

Fill in the missing word with **our** or **are** and have a go at filling in the missing punctuation too.

-
1. _____ you coming around for tea tonight?
 2. You can come around to _____ house on Saturday
 3. How old _____ you
 4. It's _____ game but you can join in if you like
 5. _____ we going in your car or _____ s
 6. I love _____ classroom
 7. Why _____ you saying that you're supposed to be _____ friend
 8. The rooms in _____ house are very big
 9. _____ restaurant is open from 12 until 9pm said the owner
 10. Where _____ you going on holiday
-

Pairs

Aims:

Work as a team. Listen to others. Explain your ideas.

Improve your vocabulary. Use a dictionary.

Pair these words and their meanings. If you are not sure of the meaning of a word, look it up.

saunter	walk in an unhurried way
amble	walk slowly
stumble	walk and trip
ramble	wander
scurry	hurry
soar	glide
beetle	rush along
halt	stop
bustle	move in a hurried way